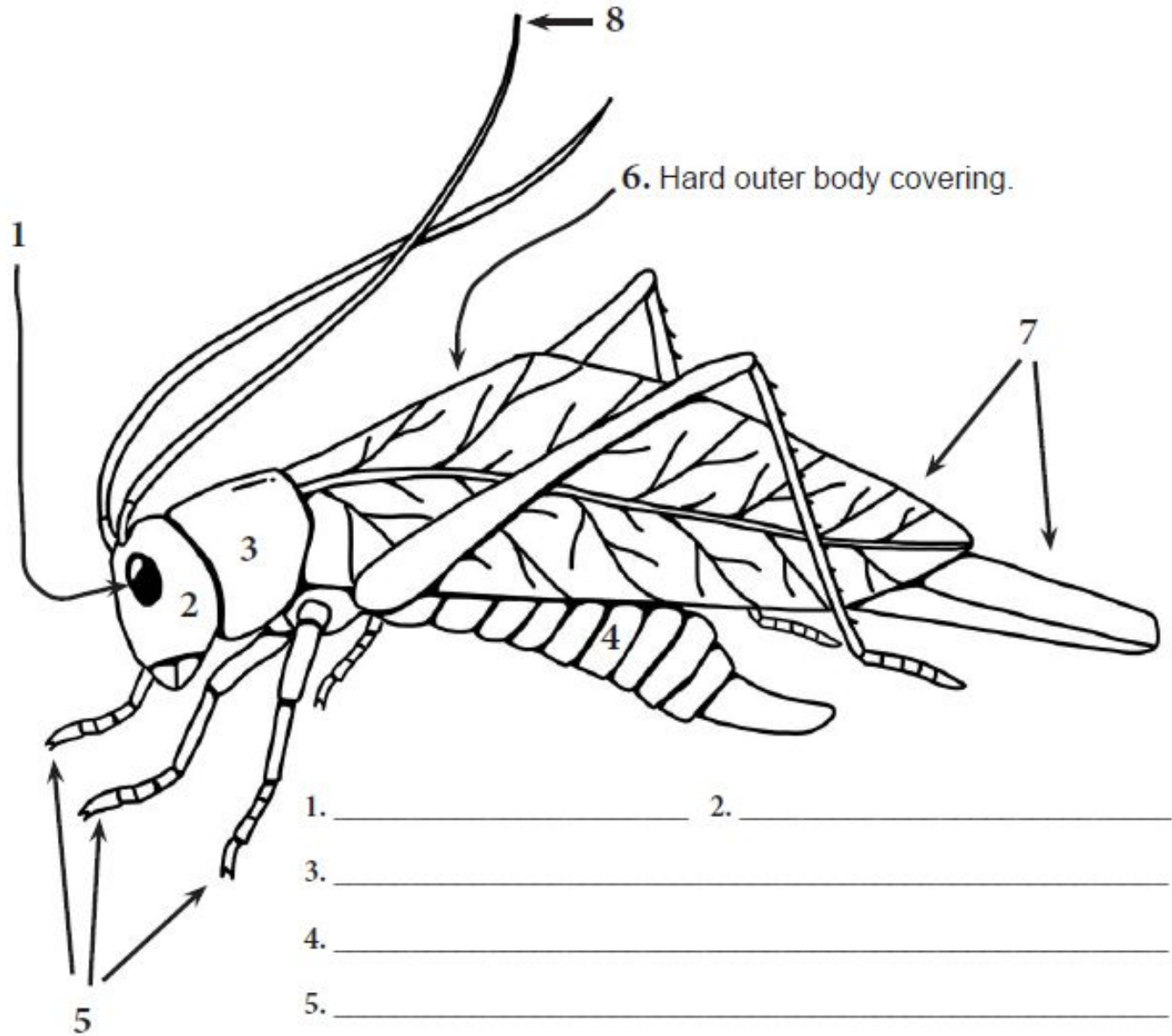


# Label the Parts of an Insect

Using what you've learned, label the parts of an insect.



1. \_\_\_\_\_
2. \_\_\_\_\_
3. \_\_\_\_\_
4. \_\_\_\_\_
5. \_\_\_\_\_
6. \_\_\_\_\_
7. \_\_\_\_\_
8. \_\_\_\_\_

Antennae (2)

Exoskeleton

Thorax

Head

Wings (2 pairs)

Legs (6)

Compound Eye

Abdomen